

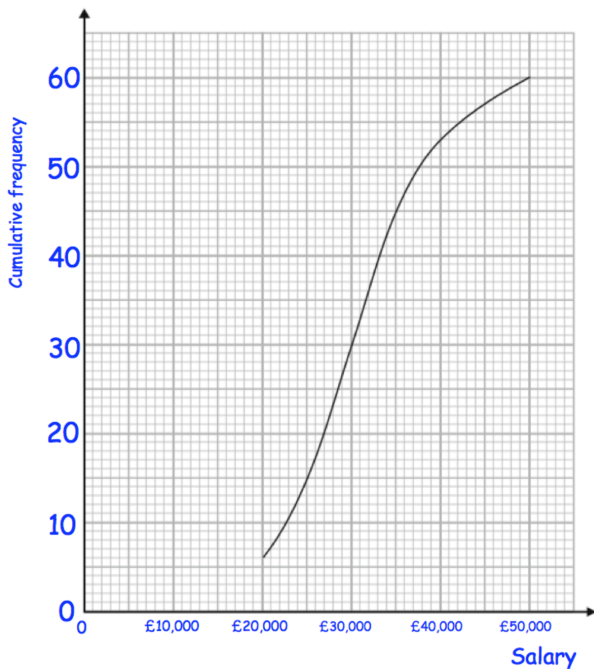
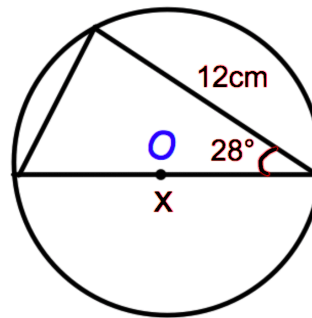


$a \times 10^4$ is a square number written in standard form.
 a is a positive integer
 Write down all the possible values of a.

The attendance at a football match is 40000.
 This number is correct to the nearest 500.
 The number of Man City fans attending the match is 29000.
 This number is correct to the nearest 1000.
 The rest of the fans support Newport County.

Work out the maximum number of Newport County fans that could have been attending the match.

Find x



Find the median salary.

Find the interquartile range of the salaries.