



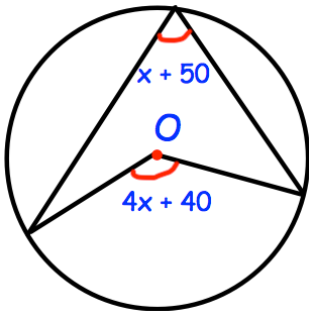
Solve

$$4x^2 + 4x + 1 = 0$$

A plane travels 20 miles west and then 30 miles north.
How far, in a direct line, is the plane from its starting point?

Simplify $4\sqrt{3} \times 2\sqrt{3}$

Simplify $\sqrt{48} \div \sqrt{12}$



Find x

Shown is a speed-time graph.
The total distance travelled is 1.15km

Find V.

