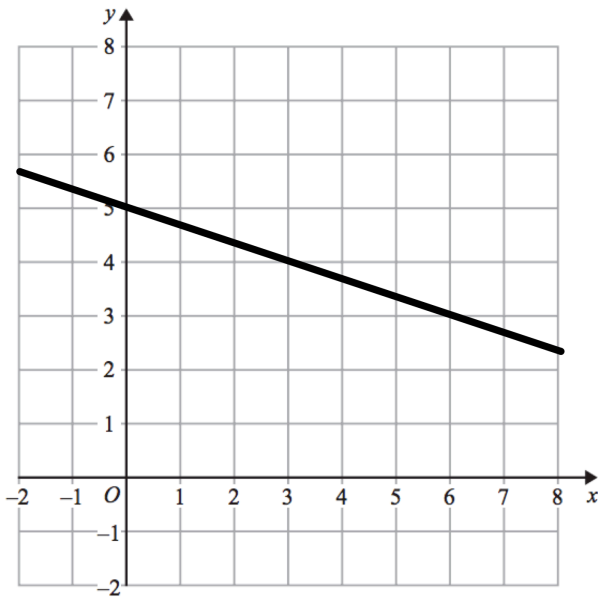


The median score was 85. Corbettmaths
The lower quartile was 78 and lowest score was 71.

The range is 21 and interquartile range 10.

Draw the box plot



Line A is shown on the grid.

Find the equation of line A

Line B is parallel to Line A and passes through (9, 20).

Find the equation of line B

What is the value of n

$$5^n = \frac{1}{125}$$

A man walks y miles north and then $(y + 8)$ miles west.

He is now 12 miles from the starting point.

Show y satisfies $y^2 + 8y - 40 = 0$