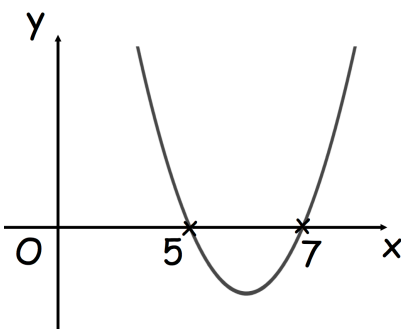


Find x

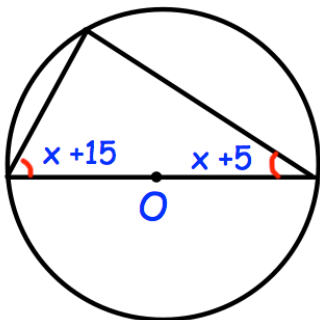
A rectangular rugby pitch has width 64 metres, measured to the nearest metre. The length of the pitch is 115 metres, measured to the nearest 5 metres.

Write down the upper bound of the perimeter of the pitch.

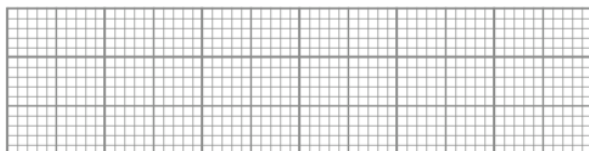


Shown is a sketch of $y = x^2 - 12x + 35$

Find the coordinates of the minimum point of the graph.



Find x



A puzzle is completed by 120 students. The quickest time was 8 seconds. 90 of the students took less than 40 seconds.

The median and interquartile range are equal.

The range is double the interquartile range. Draw a possible box plot for this information