



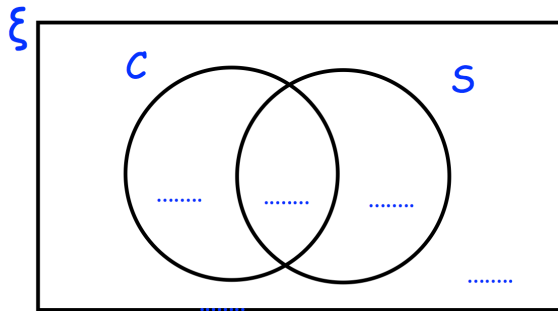
$\xi = 80$ students
 C = students that have visited Canada
 S = students that have visited Sweden

50 students have visited only Canada or only Sweden

$\frac{3}{10}$ of these 50 students have only visited Sweden

The number of students who have visited Canada is double the number of students that have visited Sweden

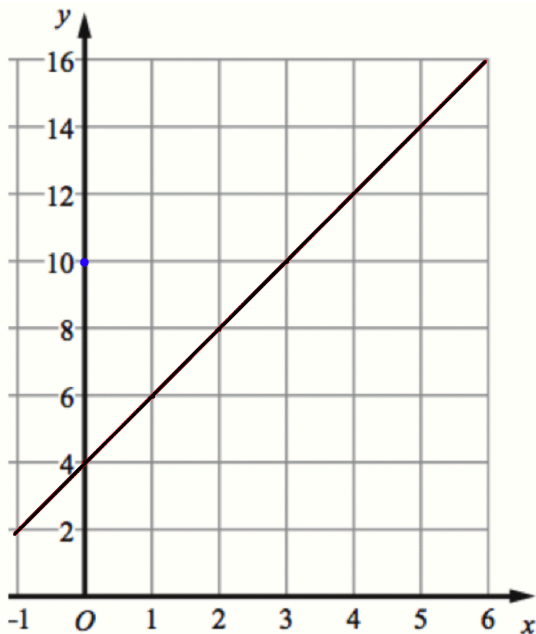
Complete the Venn Diagram



The n th term of sequence A is $90 - 5n$

The n th term of sequence B is $n^2 + 5n + 1$

How many numbers are in both sequence A and sequence B?



Write down the equation of the line shown.

A line is perpendicular to the line shown and passes through (0, 10).

Find its equation.