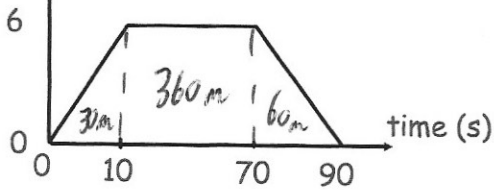




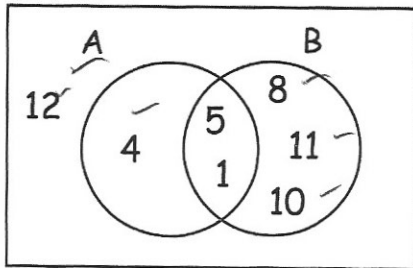
speed (m/s)



Calculate the total distance travelled.

$$30 + 360 + 60 = 450 \text{ m}$$

ξ



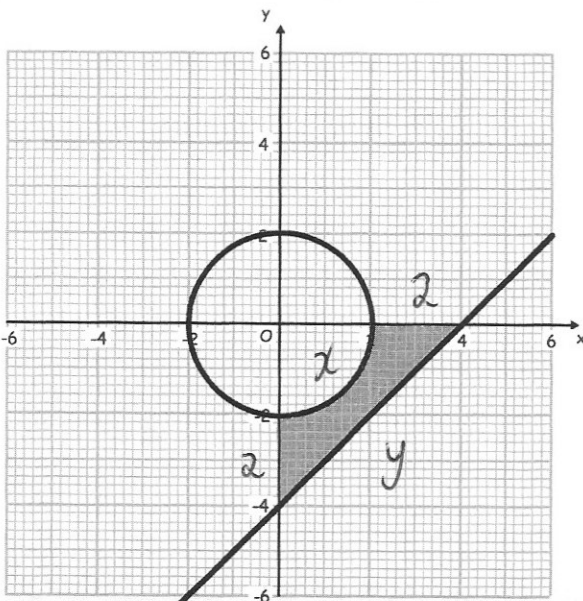
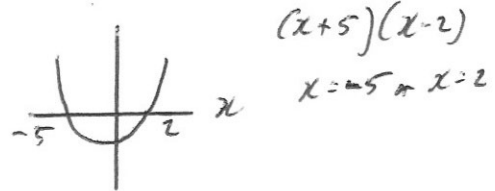
Find $P(A' \cup B')$

$$\frac{5}{7}$$

Solve the inequality

$$x^2 + 3x \leq 10 \quad x^2 + 3x - 10 \leq 0$$

$$-5 \leq x \leq 2$$



Find the perimeter of the shaded region.

$$4^2 + 4^2 = y^2$$

$$y^2 = 32$$

$$y = \sqrt{32}$$

$$y = 4\sqrt{2}$$

$$x = \frac{1}{4} \times \pi \times 4 = \pi$$

$$P = 2 + 2 + \pi + 4\sqrt{2}$$

$$= 4 + \pi + 4\sqrt{2}$$

$$= 12.798$$