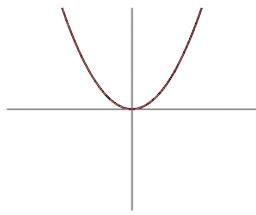




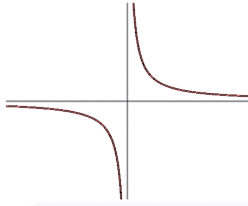
Graph A



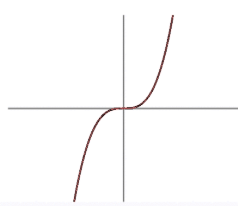
Graph B



Graph C



Graph D

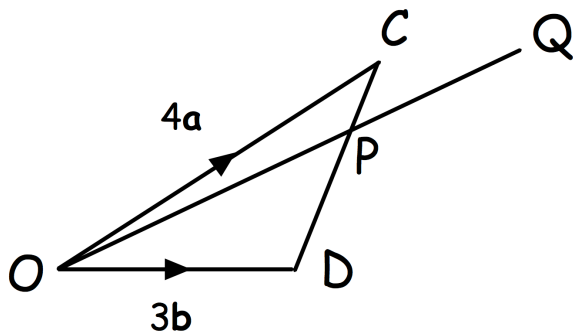


$y = x^2$ is graph A

$y = x^3$ is graph

$y = 2^x$ is graph

$y = \frac{1}{x}$ is graph

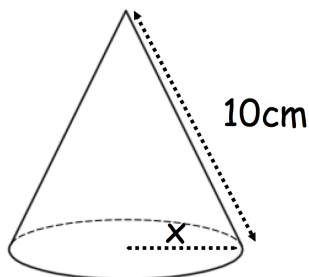


P is a point on the line CD, such that CP:PD = 1:3

Find the vector \vec{OP}

The line OP is extended, such that $OP = \frac{3}{5}OQ$

Find the vector \vec{CQ}



The total surface area of the cone is $39\pi \text{ cm}^2$
Find the length of the radius.