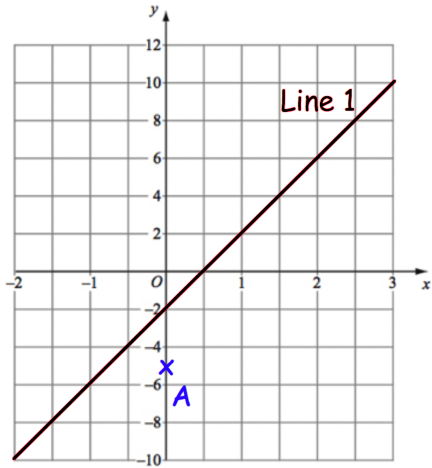




a is inversely proportional to the cube root of b .

When $a = 60$, $b = 3.375$

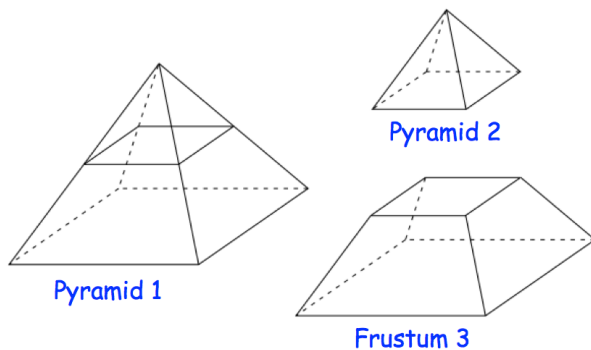
Find b when $a = 90$



Find the equation of the line perpendicular to Line 1, that passes through the point A

Find the shortest distance between Line 1 and the point A

A square based pyramid 1 is divided into two parts: square based pyramid 2 and a frustum 3, as shown.



Pyramid 1 has a base of side length 12cm.

Pyramid 2 has a base of side length 4cm.

The perpendicular height of pyramid 1 is 15cm.

Calculate the volume of frustum 3.