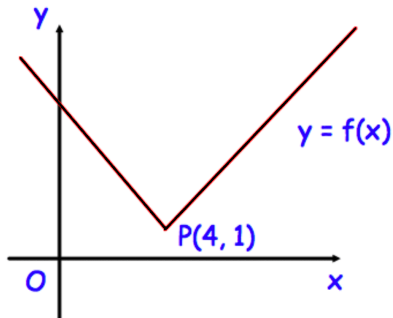




Solve $x^2 - 8x + 15 \leq 0$



What are the coordinates of the new position of P when the graph $y = f(x)$ is transformed to the graph of $y = -f(x)$?

Rosie wants to estimate the number of fish that live in a lake.
On Friday, she caught 60 fish and tagged them.
On Sunday, she caught 80 fish and Rosie found that 5 had been tagged.

Work out an estimate for the number of fish in the lake.

The cost of two TVs are in the ratio $x:y$

When both prices are increased by £40, the ratio is 13:20

When both prices are decreased by £100, the ratio is 8:15

Find the values of x and y