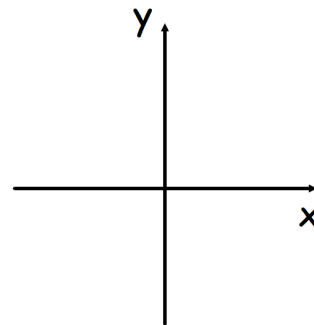
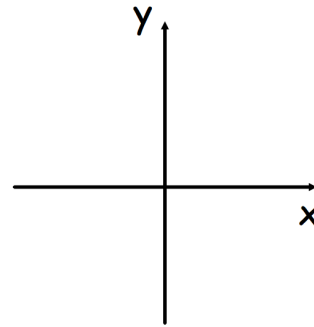
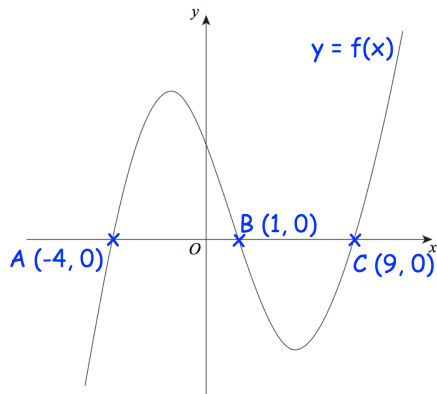




Shown is the graph $y = f(x)$



Sketch

- (a) $y = f(-x)$ (b) $y = f(x + 3)$

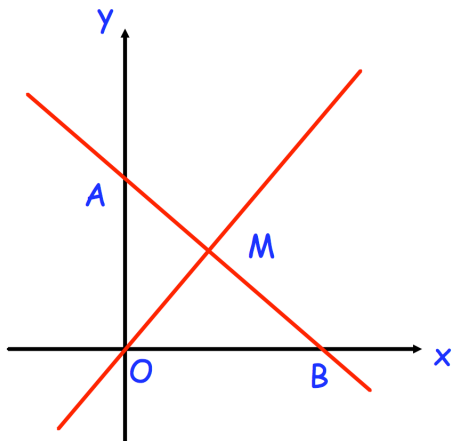
For all values of x

$$f(x) = x^2 + 5$$

$$g(x) = x - 4$$

Solve

$$fg(x) = gf(x)$$



Find the equation of line l_2

Find the area of triangle OAM.

The line l_1 passes through the points A and B. It has equation $2x + 5y = 18$.
 M is the midpoint of AB.
 The line l_2 passes through the origin, O, and M.