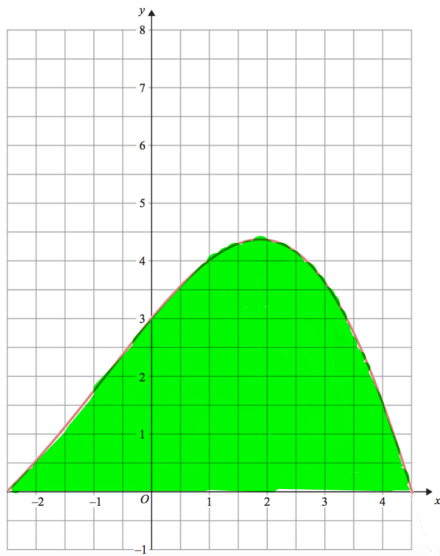




Work out

$$27^{-\frac{2}{3}}$$



Calculate an estimate for the rate of change at $x = 1$

Calculate an estimate for area under the curve (shaded region)

Make c the subject

$$w = \frac{ac}{a - c}$$

The population of island A is 4 times larger than island B.
It is expected that every year, the population of island A decreases by 5% and the population of island B increase by 5%

After how many years, will the population of island B be greater than island A?