

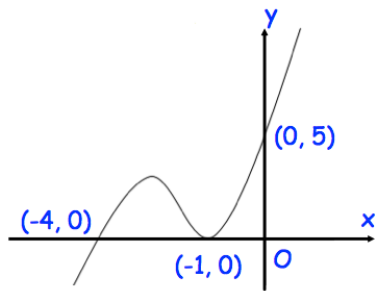


Which of these values cannot be the cosine of an angle?

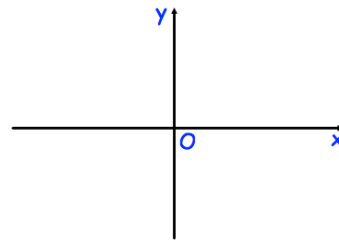
-1 3 0.7 -0.04

Shown below is the curve with equation $y = f(x)$.

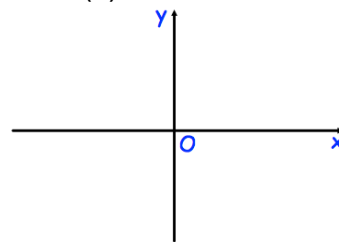
The curve passes through the points $(-4, 0)$, $(-1, 0)$ and $(0, 5)$



Sketch $y = f(x - 1)$



Sketch $y = -f(x)$



Jenson and Burt each write down a proper fraction.

Jenson wrote down a fraction, where the denominator is one more than twice the numerator.

Both the numerator and denominator of Burt's fraction are three more than Jenson's.

The sum of the two fractions is $\frac{37}{36}$

Find the difference between the fractions.