



Make  $m$  the subject

$$\frac{3m + 2}{c} = \frac{m + 1}{a}$$

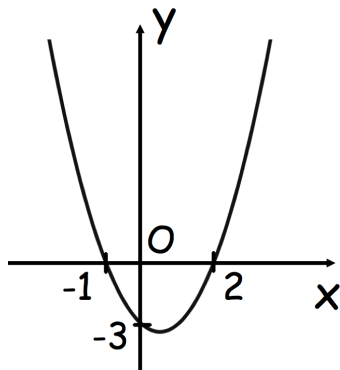
The time taken,  $t$ , for the passengers to be checked-in for a flight is inversely proportional to the square of the number of staff,  $s$ , working.  
It takes 30 minutes for passengers to be checked-in when 10 staff are working.

Find an equation connecting  $t$  and  $s$ .

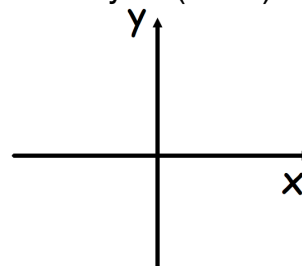
Solve  $x^2 + 6x + 3 = 0$  giving your answers in surd form.

Solve the inequality  $x^2 + 6x + 3 < 0$

Here is a sketch of a curve with equation  $y = f(x)$



Sketch  $y = f(x + 2)$



Sketch  $y = -f(x)$

