



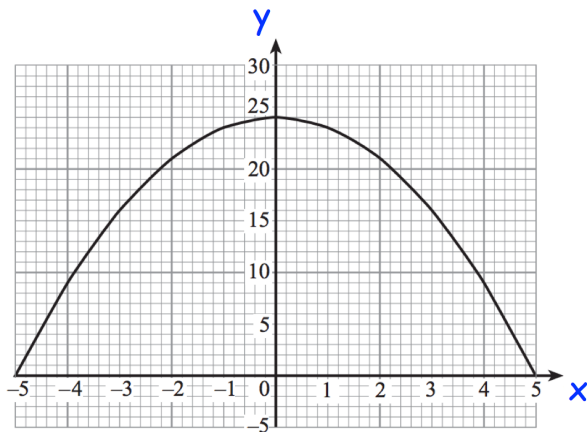
Given

$$f(x) = x + 3$$

$$g(x) = x^2$$

find

$$gf(x)$$

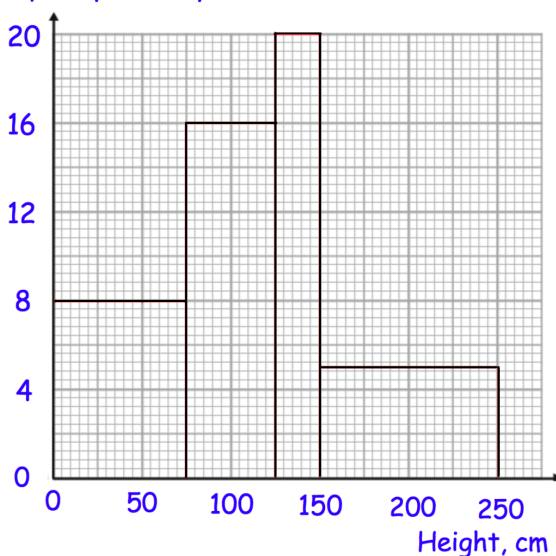


Calculate an estimate of the gradient of the curve at the $x = 3$

Find an estimate of the area between the curve and the x-axis between $x = 0$ and $x = 5$

The histogram shows the heights of 2400 sunflowers.

Frequency Density



Find an estimate of the median

Two sunflowers are selected at random. Calculate an estimate of the probability that both sunflowers have a height greater than 2m.