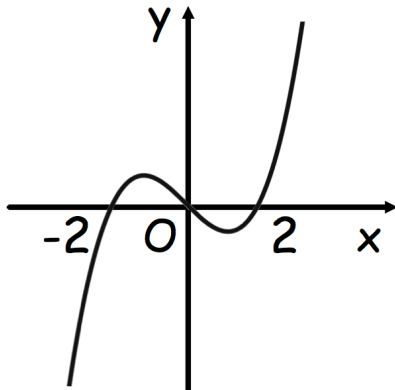
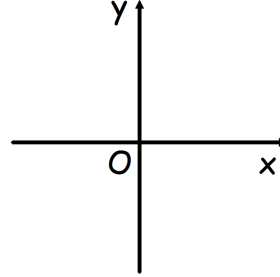




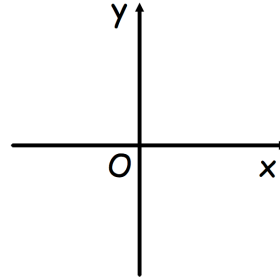
Shown is the graph of $y = f(x)$



Sketch $y = -f(x)$



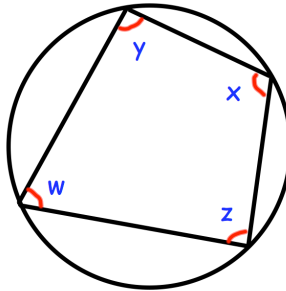
Sketch $y = f(x + 2)$



$$w : x = 2 : 3$$

$$x : y = 9 : 8$$

Work out the size of angle z .



Point A has coordinates $(9, 7)$

Point B has coordinates $(13, -27)$

Find the equation of the line perpendicular to AB that passes through the midpoint of AB

Find the size of angle BAC.

