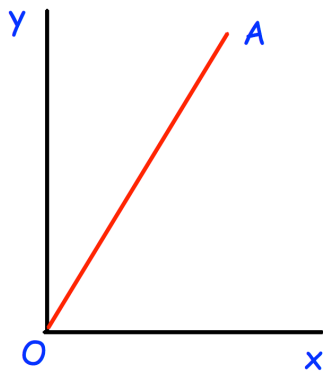




Panashe picks a five digit odd number.
 The second digit is less than 8.
 The fourth digit is a positive square number
 The first digit is a prime number.

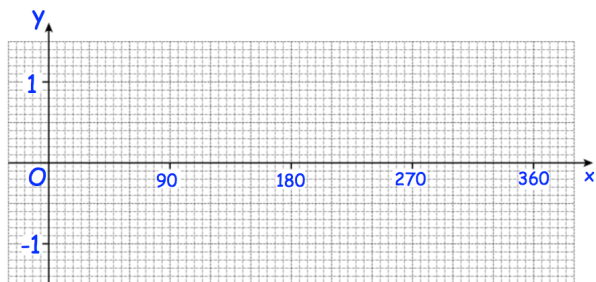
How many different numbers could she pick?



The line OA has a gradient of 3
 The length of OA is $12\sqrt{10}$

Work out the coordinates of A

Sketch the graph of $y = \sin x$ for $0 \leq x \leq 360$.



The area of a rectangle is $\sqrt{125}$ cm²
 The length of the rectangle is $(2 + \sqrt{5})$ cm.
 Calculate the width of the rectangle.

Express your answer in the form $a + b\sqrt{5}$, where a and b are integers.