

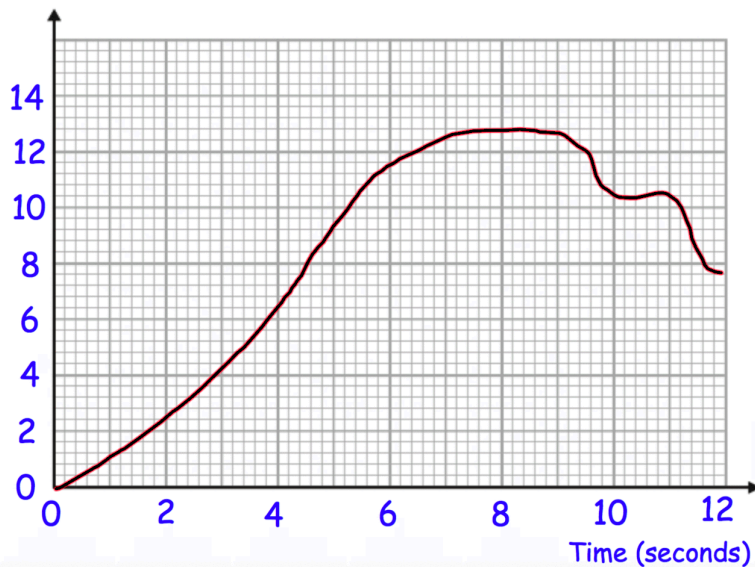


Work out

$$27^{\frac{2}{3}} \times 2^{-3}$$

giving your answer as a decimal

Velocity m/s



Here is a velocity/time graph for the first 12 seconds for a particle

Calculate an estimate for the acceleration of the particle at 6 seconds.

Calculate an estimate for the distance travelled by the particle in the first 12 seconds

Calculate an estimate for the average velocity of the particle over the first 12 seconds.

Calculate an estimate for the average acceleration over the first 4 seconds.