



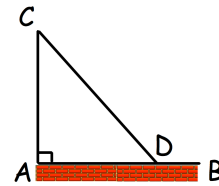
Work out

$$32^{-\frac{4}{5}}$$

A farmer builds an enclosure by using an existing wall, AB, and using 18m of fencing to create AC and CD.

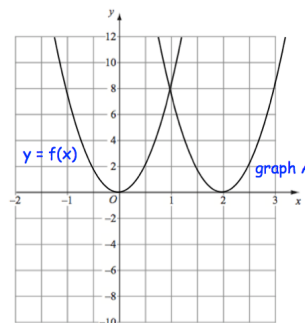
D is a point on the wall AB that is 6m from A.

Find the lengths AC and CD.



Graph A is a translation of the graph $y = f(x)$

Write down the equation of graph A.

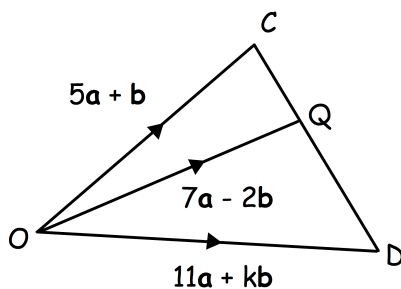


A cuboid container has dimensions of
height = $\sqrt{5}$ metres

width = $\sqrt{6}$ metres

length = $\frac{9}{\sqrt{2}}$ metres

Find the volume of the container.
Give your answer in the form $a\sqrt{15}$
where a is an integer.



Q is a point on the line CD.
Find k.