Find x

In a bag there are green, white and red counters.
 Altogether there are 2850 counters.
 The ratio of green to white counters is $2 : 3$
 The ratio of white to red counters is $7 : 1$

How many white counters are there in the bag?

A is directly proportional to the cube root of B .

When $A = 90$, $B = 27$.Find A in terms of B .

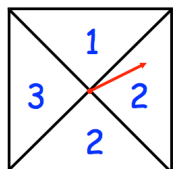
The pressure of a football is 500 grams per square centimetre.

Given

1 pound = 0.4536 kilograms

1 inch = 2.54 centimetres

Work out the pressure in pounds per square inch.



The spinner is spun three times.
 The three numbers are added together to give a score.

Find the probability the score is even.