

Calculate the surface area

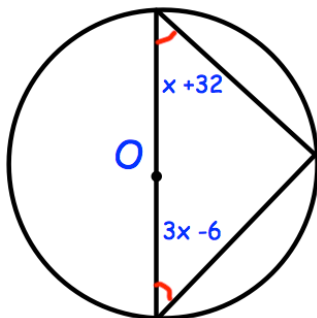
Line 1:  $y = 3x + 1$   
 Line 2:  $y = 2x - 3$   
 Line 3:  $3y + x = 6$   
 Line 4:  $y = \frac{1}{3}x - 1$

Which lines are perpendicular?

$$w^0 \quad w^3 \quad \frac{w^3}{w^4} \quad w^{-2}$$

w is greater than 1.

Write in ascending order.



Find x

The volumes of two mathematically similar solids are in the ratio 8 : 125  
 The surface area of the smaller solid is  $24 \text{ cm}^2$

Work out the surface area of the larger solid.