



Simplify

$$\frac{\pi}{2} - \frac{\pi}{7}$$

$$\frac{7\pi}{14} - \frac{2\pi}{14}$$

$$\frac{5\pi}{14}$$

The ratio of red sweets to green sweets to yellow sweets in a bag is 4:5:11

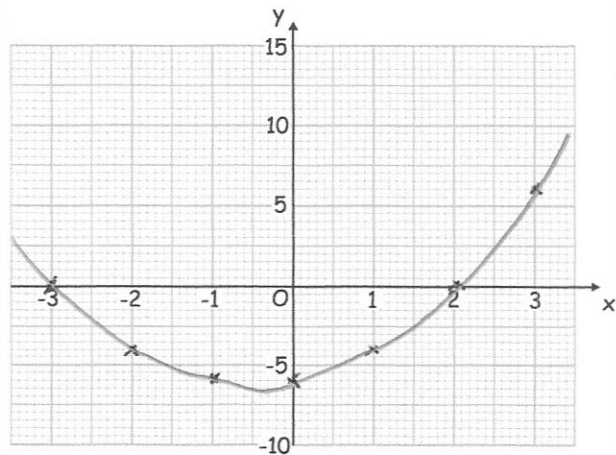
$$4 + 5 + 11 = 20$$

What percentage of the sweets are green?

$$\frac{5}{20} = 25\%$$

Complete the table of values for  $y = x^2 + x - 6$

x	-3	-2	-1	0	1	2	3
y	0	-4	-6	-6	-4	0	6



Draw  $y = x^2 + x - 6$

James says  $(a + 2b)^2 = a^2 + 4b^2$   
Is he correct?

$$(a + 2b)(a + 2b)$$

$$a^2 + 2ab + 2ab + 4b^2$$

$$a^2 + 4ab + 4b^2$$

No