

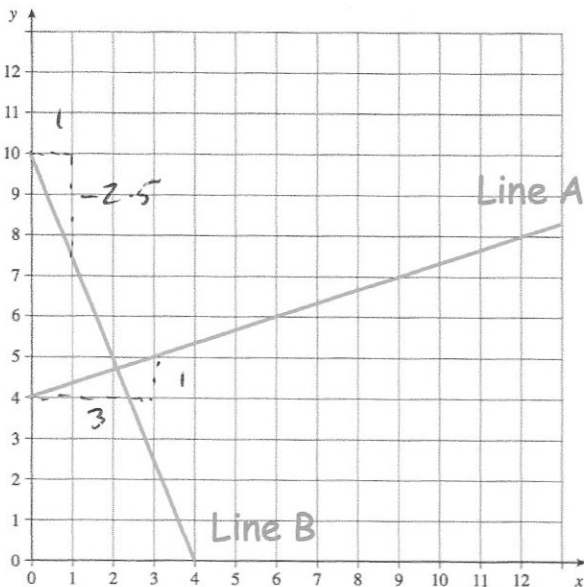


Estimate

$$\sqrt[3]{\frac{498.7}{0.502}} \approx \sqrt[3]{\frac{600}{0.5}}$$

$$= \sqrt[3]{1000}$$

10

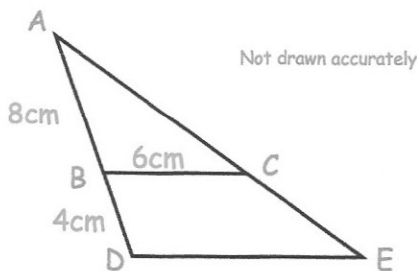


Write down the equation of Line A

$$y = \frac{1}{3}x + 4$$

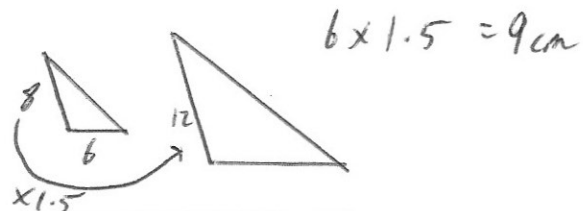
Write down the equation of Line B

$$y = -2.5x + 10$$



Triangle ABC is similar to triangle ADE.

Work out the length of DE.



Find the size of angle x

$$\tan x = \frac{3}{5.1}$$

$$x = 30.466^\circ$$

