

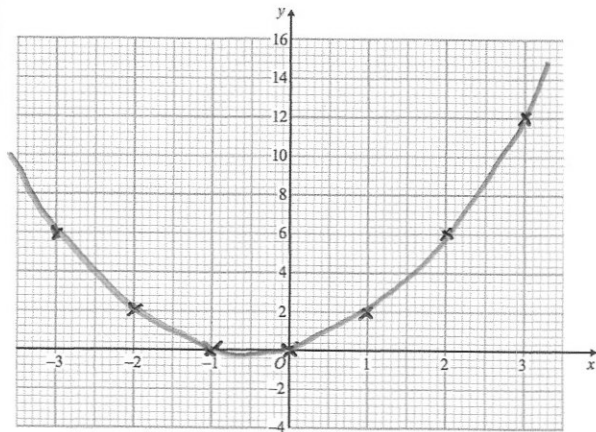


Write down the reciprocal of 0.04 = $\frac{1}{25}$

25

Complete the table of values for
 $y = x^2 + x$

x	-3	-2	-1	0	1	2	3
y	6	2	0	0	2	6	12



On the grid, draw the graph of
 $y = x^2 + x$

A bank account pays 1.5% interest in the first year and then pays 1% compound interest for each year onwards.

Martina invests £400.

How much money will she have after 4 years?

$$400 \times 1.015 = 406$$

$$406 \times 1.01^3 = \pounds 418.30$$

Solve the simultaneous equations

$$9x - 4y = 59$$

$$2x - y = 12 \quad \times 4$$

$$9x - 4y = 59$$

$$8x - 4y = 48$$

$$\underline{\quad\quad\quad}$$

$$x = 11$$

$$22 - y = 12$$

$$y = 10$$