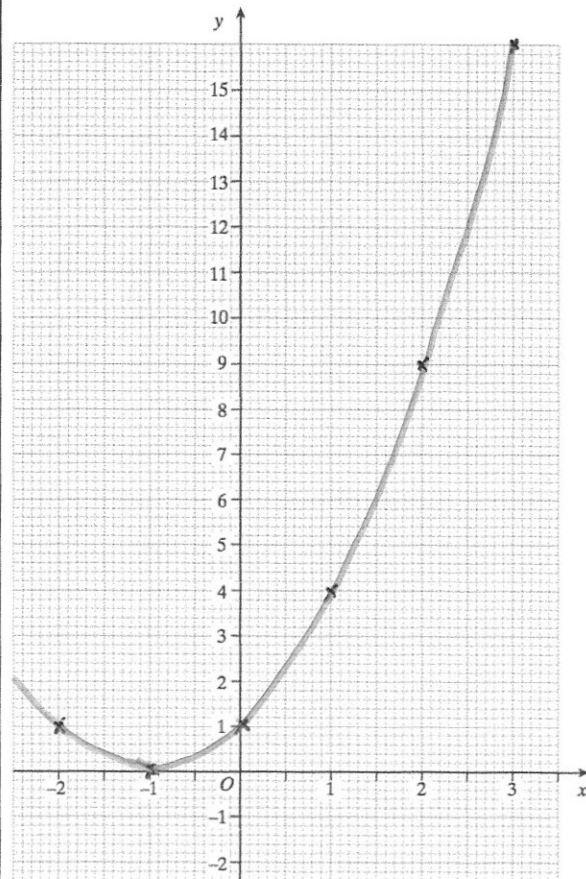




Complete the table of values of $y = x^2 + 2x + 1$

x	-2	-1	0	1	2	3
y	1	0	1	4	9	16

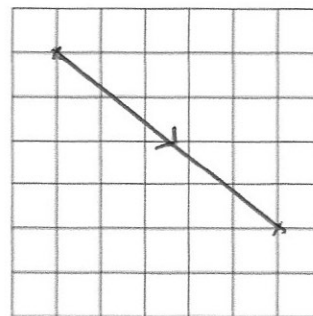
Draw the graph $y = x^2 + 2x + 1$



Write down the coordinates of the turning point on the graph $y = x^2 + 2x + 1$

Draw an arrow to represent the vector

$$\begin{pmatrix} 5 \\ -4 \end{pmatrix}$$



ABCD is a trapezium.

Angle BAD = 70° CD = 17.6cm
 AB = 25cm AM = 3cm

Find angle ABC

