



Make f the subject of

$$x = \frac{2f-3}{f-1}$$

$$x(f-1) = 2f-3$$

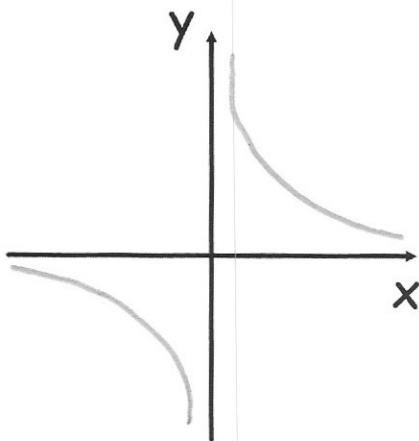
$$fx - x = 2f-3$$

$$fx - 2f = x-3$$

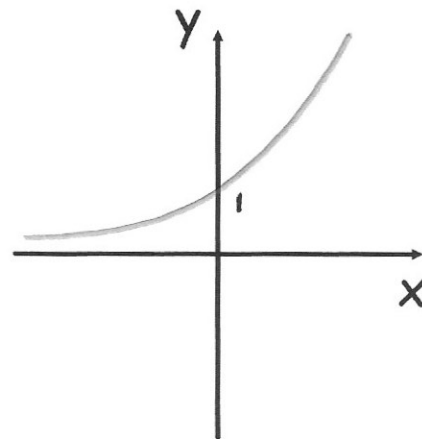
$$f(x-2) = x-3$$

$$f = \frac{x-3}{x-2}$$

Sketch $y = \frac{1}{x}$



Sketch $y = 4^x$



The histogram shows the speeds of some cars while they travelled along a road.

156 cars were travelling less than 10mph.

Estimate how many cars were travelling at a speed greater than 25mph.

$$110 + 20 = 130 \text{ squares}$$

$$156 \div 130 = 1.2 \text{ cars per square}$$

$$210 + 260 = 470$$

$$470 \times 1.2 = 564 \text{ cars}$$

