

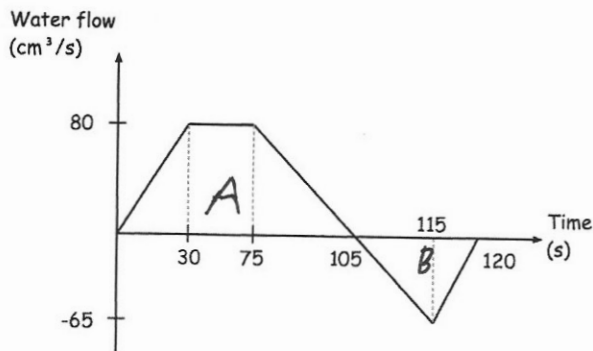
9th July

Higher Plus 5-a-day



Corbettmaths

The graph below shows information on how an empty container is being filled with water.

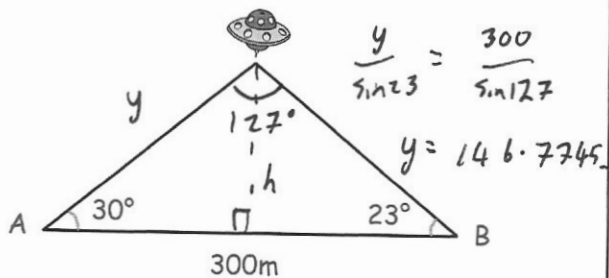


How much water is in the container after 120 seconds?

$$A: \frac{1}{2} (105 + 45) \times 80 = 6000 \text{ cm}^3$$

$$B: \frac{1}{2} \times 15 \times 65 = 487.5 \text{ cm}^3$$

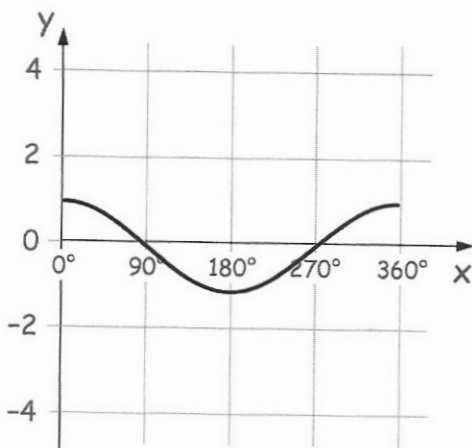
$$6000 - 487.5 = 5512.5 \text{ cm}^3$$



Find the height of the UFO above the ground.

$$\begin{aligned} &5^{\circ} H \\ &\sin(30) \times 146.77 \dots \\ &73.39 \text{ m} \end{aligned}$$

Shown is the graph of $y = \cos x$



Sketch $y = 3 + \cos x$ *3 up* and $y = 1 - \cos x$

