

Name:

Exam Style Questions

Flow Charts



Equipment needed: Calculator, pen

Guidance

1. Read each question carefully before you begin answering it.
2. Check your answers seem right.
3. Always show your workings

Video Tutorial

www.corbettmaths.com/contents

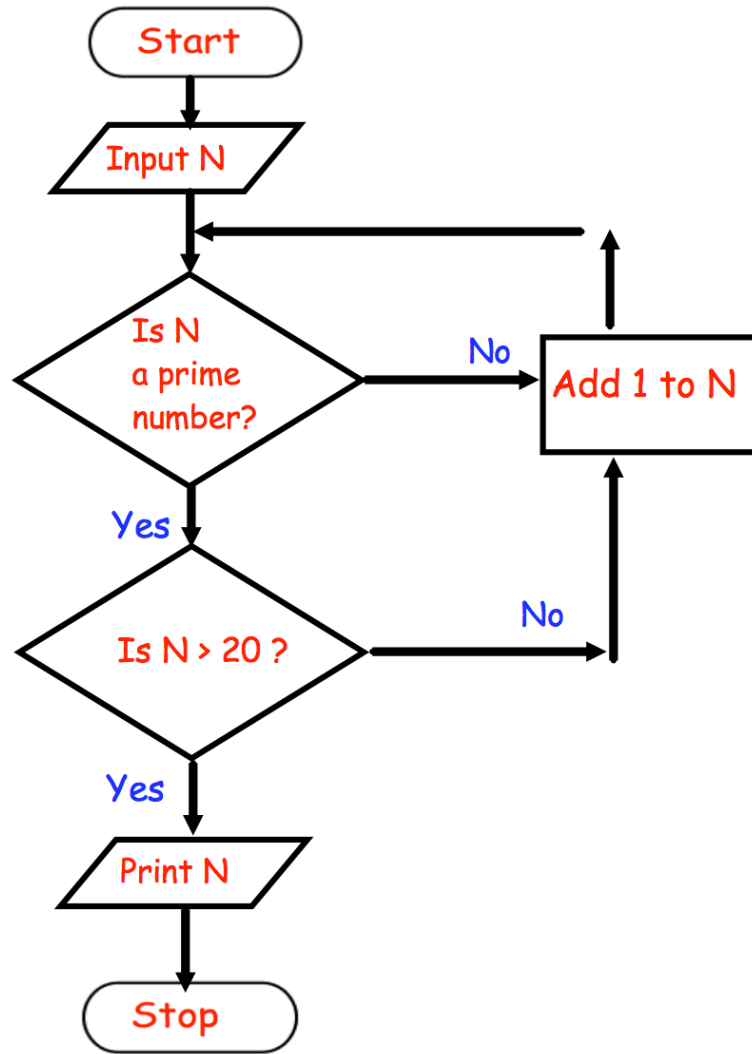
Video 364



Answers and Video Solutions



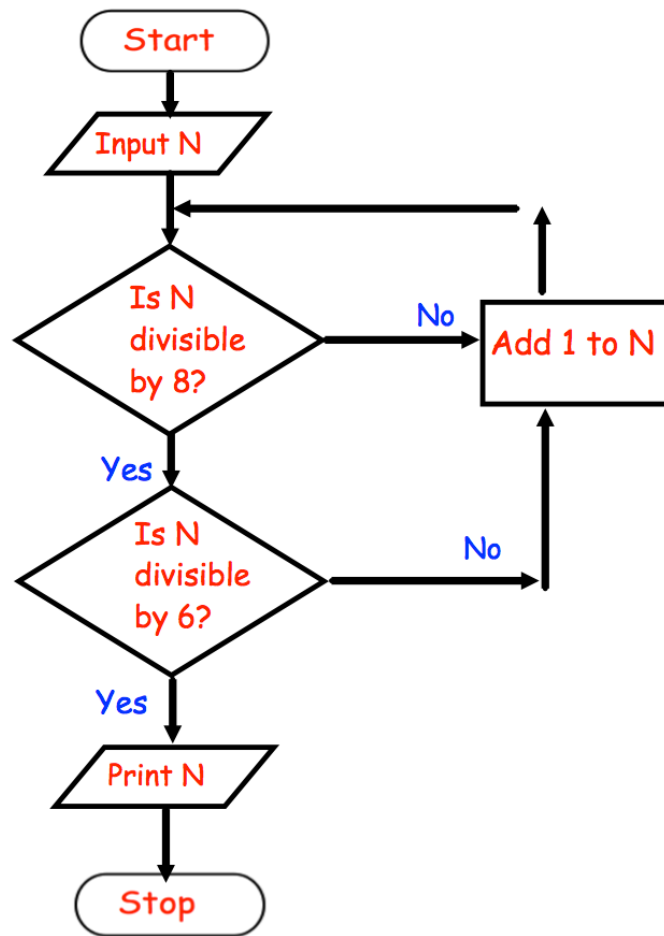
1.



Starting with $N = 15$, use the flow chart to find the number printed.

Answer Number Printed =
(2)

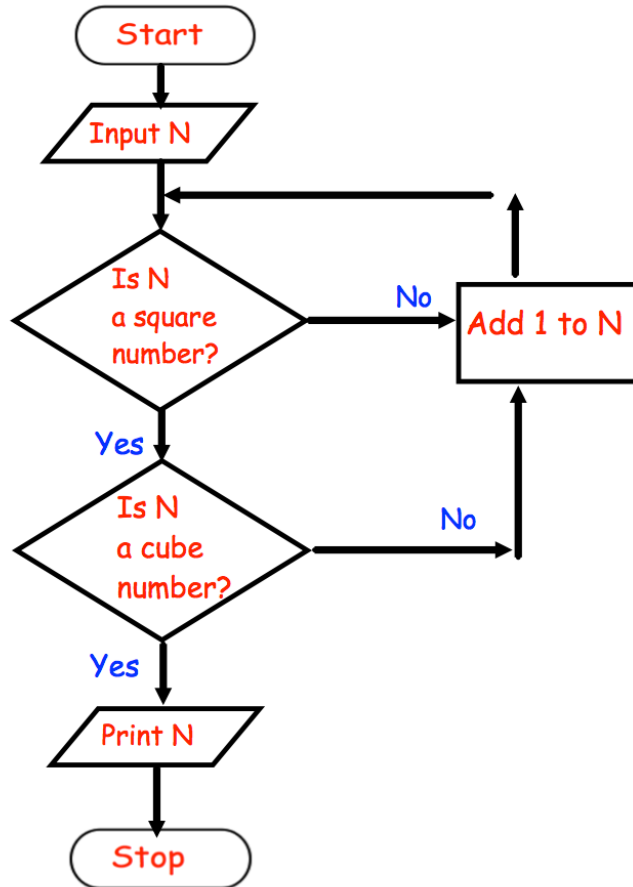
2.



Starting with $N = 30$, use the flow chart to find the number printed.

Answer Number Printed =
(2)

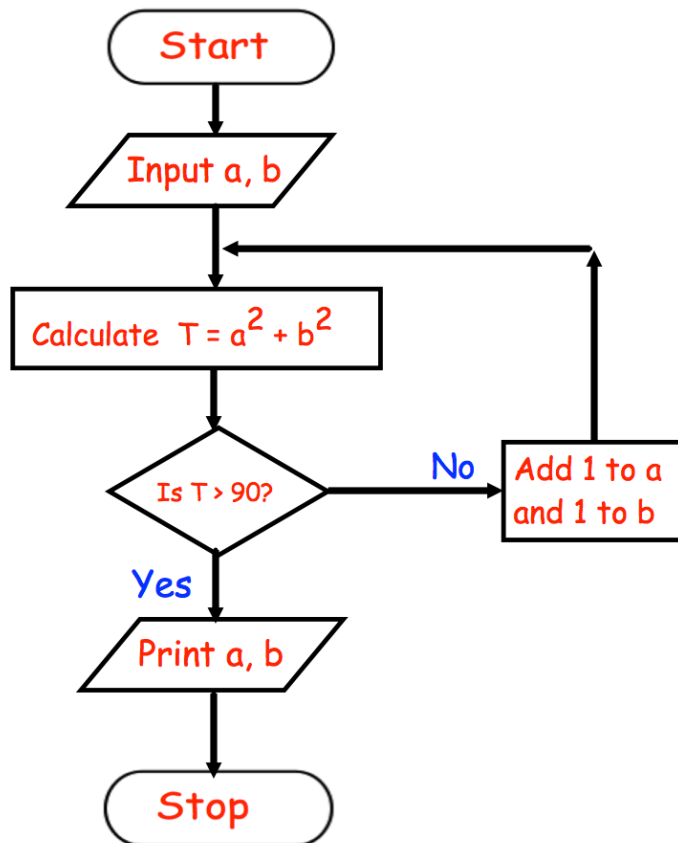
3.



Starting with $N = 20$, use the flow chart to find the number printed.

Answer Number Printed =
(2)

4.



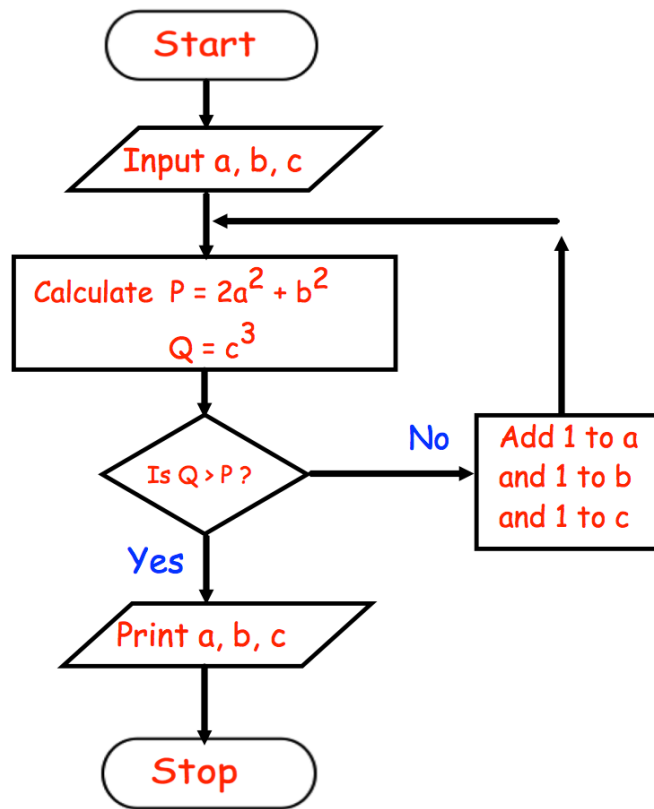
Starting with $a = 3$, $b = 1$ use the flow chart to find the values printed.

a	b	T

Answer $a = \dots\dots\dots$, $b = \dots\dots\dots$

(3)

5.



Starting with $a = 5$, $b = 3$, $c = 1$ use the flow chart to find the values printed.

a	b	c	P	Q

Answer $a = \dots\dots\dots$, $b = \dots\dots\dots$, $c = \dots\dots\dots$

(3)