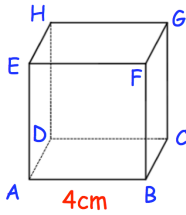


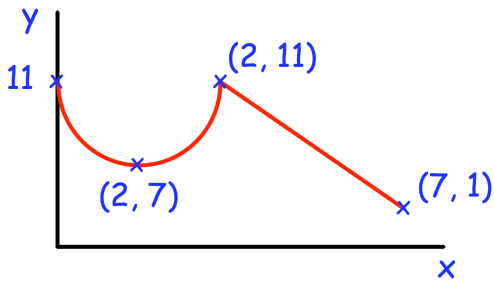
2nd July

Corbettmaths

Shown below is a cube.



Calculate the size of angle BDF



Work out the values of a, b, c and d.

$$f(x) = (x - a)^2 + b \quad \text{for } 0 \leq x < 2$$

$$= cx + d \quad \text{for } 2 \leq x \leq 7$$

A circle has centre C and equation

$$x^2 + y^2 + 16x + 4y - 10 = 0$$

Find the centre of the circle

Find the radius of the circle