

Name: \_\_\_\_\_

Exam Style Questions  
Time Calculations  
Timetables



Equipment needed: Calculator, pen

**Guidance**

1. Read each question carefully before you begin answering it.
2. Check your answers seem right.
3. Always show your workings

Video Tutorial

[www.corbettmaths.com/contents](http://www.corbettmaths.com/contents)

Videos 320, 322



Answers and Video Solutions



1. Write 4 hours in minutes.



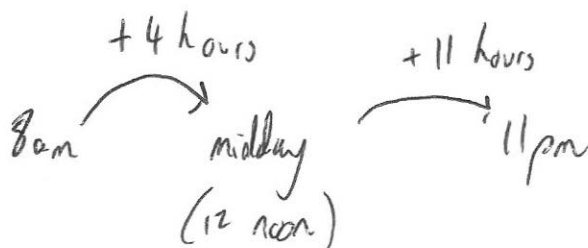
$$4 \times 60 = 240$$

240 .....minutes  
(1)

2. A gym opens at 8am and closes at 11pm every day.



How many hours is the gym open each day?



15 .....hours  
(1)

3. A lesson begins at 13:00 and finishes at 14:10



Harry says that the lesson lasts 110 minutes.

Is Harry correct?  
Explain your answer.

No, there are 60 minutes in an hour,  
so the lesson lasts 70 minutes.

(1)

4. Write 660 minutes in hours.



$$660 \div 60 = 11$$

11 .....hours  
(1)

5. A song lasts 345 seconds.



How long does the song last in minutes and seconds?

60 120 180 240 300

.....5.....minutes .....45.....seconds  
(1)

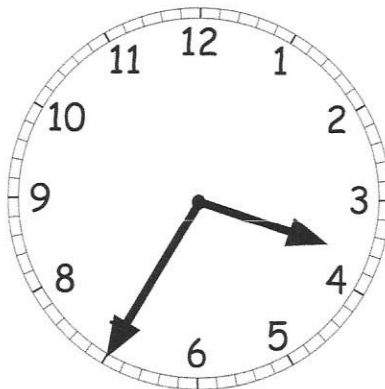
6. Write 277 minutes in hours and minutes.



60 120 180 240

.....4.....hours .....37.....minutes  
(1)

7. Willow looks at the clock.



She finished school half an hour ago.

What time did Willow finish school?

15:05  
~~15:10~~  
or  
3:05 pm

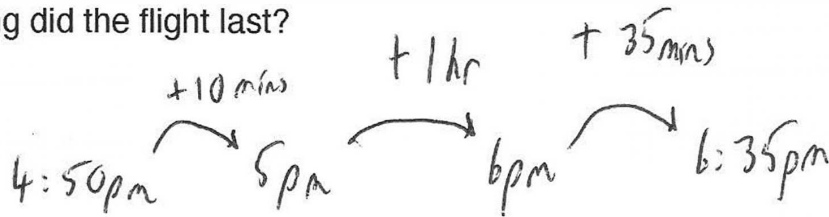
.....  
(2)

8. A flight took off at 4.50pm.



The flight landed at 6.35pm.

How long did the flight last?



1 hr 45 mins  
(2)

9. A movie lasts 110 minutes.

1 hour 50 mins



The movie began at 19:25

What time did the movie end?

19:25    20:00    21:00    21:15  
+35m    +1hr    +15m

21:15

(2)

10. Circle the longest amount of time below.



6 days

8700 minutes

$$146 \times 60 = 8760 \text{ mins}$$

146 hours

$$6 \times 24 = 144 \text{ hr}$$

$$144 \times 60 = 8640$$

(1)

11. Here is part of a timetable for a bus.



Southville	09 18	10 38	12 05
Leek	09 28	10 48	-----
Milton	09 41	11 01	-----
Newtown	09 49	11 09	-----
Red Island	09 55	11 15	12 36
Sandville	10 13	11 33	-----
Bakerstown	10 31	11 51	13 00

A bus leaves Southville at 10 38

(a) At what time should the bus arrive at Newtown?

11:09  
.....  
(1)

(b) How long will the journey take?

10:38  $\xrightarrow{+22 \text{ min}}$  11:00  $\xrightarrow{+9}$  11:09  
.....minutes  
(1)

James arrives at the Milton bus stop at 09 29.  
He waits for the next bus to Red Island.

(c) (i) How many minutes should he wait?

12  
.....minutes  
(1)

(ii) At what time should James arrive at Red Island?

09:55  
.....  
(1)

Sally wants to travel from Southville to Bakerstown.  
The 12 05 is an 'express' bus.

(d) How many minutes shorter is the journey if she takes the 'express bus'?

09:18  $\xrightarrow{+42 \text{ min}}$  10:00  $\xrightarrow{+31 \text{ min}}$  10:31  $\xrightarrow{+55 \text{ min}}$  11:26  
73 mins      55 mins  
73 - 55 = 18  
.....minutes  
(2)

12. Here is part of a train timetable.



Southville	07 04
Leek	07 09
Jamestown	07 38
Lincoln	08 01
Gold City	08 39

- (a) How long is the journey from Southville to Jamestown?

34 .....minutes  
(1)

- (b) How long is the journey from Leek to Lincoln?

07:09  $\xrightarrow{+51}$  08:00  $\xrightarrow{+1}$  08:01 .....minutes  
(1)

The train leaves Gold City at 08 45.  
It takes 33 minutes to travel to Washington.

- (c) At what time does the train arrive in Washington?

08 45  $\xrightarrow{+15}$  09:00  $\xrightarrow{+18}$  09:18 .....  
(1)

Lenny lives in Jamestown and works in Lincoln.

He works Monday to Friday. 5 days

Lenny travels to work and back each day by train.

2 journeys each day  
10 per week

- (c) How long does Lenny spend on the train each week?

Give your answer in hours and minutes.

07:38  $\xrightarrow{+22}$  08:00  $\xrightarrow{+1}$  08:01

23 mins  $\times 10 = 230$  mins

3 .....hours .....50 .....minutes  
(3)

60 120 180

13. Here is part of a train timetable.



	✓	✓	Departure times	✗	✗
Antrim	12:30		13:00	14:00	16:00
Randalstown	12:45	✗	13:15	14:15	16:15
Ballymena	13:01		13:31	14:31	16:31
Ballycastle	13:39	✗	14:09	15:09	17:09

Freddy wants to travel from Randalstown to Ballycastle.

He arrives at Randalstown at 13:03 to catch the next train to Ballycastle.

(a) How long does this train journey take?

$13:15 \xrightarrow{+45 \text{ min}} 14:00 \xrightarrow{+9 \text{ min}} 14:09$

54  
 .....minutes  
 (2)

Jennifer lives in Antrim and her friend lives in Ballymena.

Jennifer lives a 5 minute walk from Antrim train station.

Her friend lives a 30 minute walk from Ballymena train station.

Jennifer wants to arrive at her friend's house **before** 3pm.

Plan Jennifer's journey to her friend's house.

Jennifer can either catch the 12:30 or 13:00 trains but not  
 the 14:00 or 16:00

example: Jennifer should leave before 12:55 so she can get to the  
 train station in Antrim by 13:00. She should get the 13:00  
 train to Ballymena, which will arrive at 13:31. She should  
 then walk to her friend's house and she should arrive  
 by 14:01, which is before 3pm.

(5)

14. The timetable shows the times of trains from Southville to Milton.



Southville	0630	0650	0720	0745
Leek	0703	0715	0751	0810
Milton	0824	0835	0920	0940

*1 hr 54m      1 hr 45m      2 hr      1 hr 55m*

- (a) Georgie arrives at the station at Southville at 0658 and gets the next train to Leek.

What time does this train leave Southville?

*07:20*

(1)

- (b) The 0745 train from Southville arrives in Milton 11 minutes early.

What time does this train arrive in Milton?

*09:29*

(1)

- (c) Which train completes the journey from Southville to Milton in the shortest time?

*The second train completes the journey in 1 hr 45 mins*

*The 06:50 train*

(2)



15. A ferry leaves a harbour every 20 minutes starting at 09:00



The last ferry leaves at 18:00

How many times does a ferry leave the port during one day?

09:00 09:20 09:40 10:00 10:20 10:40 11:00  
 11:20 11:40 12:00 12:20 12:40 13:00 13:20  
 13:40 14:00 14:20 14:40 15:00 15:20 15:40  
 16:00 16:20 16:40 17:00 17:20 17:40 18:00

28

(3)

16. Part of a bus timetable is shown below.



Exeter departs at 16:40  
 Birmingham arrives at 21:32

How long should the journey from Exeter to Birmingham take?

+20 mins  
 16:40 → 17:00  
 4 hrs  
 17:00 → 21:00  
 +32 mins  
 21:00 → 21:32

4 hrs 52 mins

(3)

17. Rebecca takes part in a charity bike ride.



She left home at 11:40am and cycles to Bristol.  
It takes 2 hours and 45 minutes.

1hr 10min

Rebecca and the other cyclists have a picnic that lasts 70 minutes.

Afterwards, it takes Rebecca 3 hours and 20 minutes to cycle home.

What time does Rebecca arrive home?

11:40  $\xrightarrow{+20 \text{ min}}$  12:00  $\xrightarrow{+1 \text{ hr } 10 \text{ min}}$  1:10  $\xrightarrow{+2 \text{ hr}}$  3:10 (arrive in Bristol)  
 3:10  $\xrightarrow{+1 \text{ hr}}$  4:10  $\xrightarrow{+70 \text{ min}}$  5:20 (picnic ends)  
 5:20  $\xrightarrow{+3 \text{ hr } 20 \text{ min}}$  8:40

18:55

(4)

18. Write 5.4 hours in hours and minutes.



$$0.4 \times 60 = 24$$

5 hours 24 minutes  
 .....hours .....minutes  
 (1)

19. The 27<sup>th</sup> October 2024 was a Sunday.



What day of the week was 15<sup>th</sup> November 2024?

Friday

(2)

20. This timetable shows the times (GMT) of trains between London and Paris.



London Paris	04 21 07 11	05 19 08 09	06 39 09 29	07 59 10 49
Paris London	14 40 17 30	15 28 18 18	17 00 19 50	18 49 21 39

- (a) At what time does the 05:19 from London arrive in Paris?

08:09  
.....  
(1)

- (b) How long does each journey take?

2 hours 50 minutes  
.....hours.....minutes  
(1)

- (c) Tom arrives in Paris at 09:29.  
He spends the next 7 hours visiting tourist attractions in Paris.

What is the time of the next train he can catch back to London?

09:29  $\xrightarrow{+7hr}$  16:29

17:00  
.....  
(1)

21. A car park costs £0.05 per minute.



When she left she had to pay £5.60  
Amelia left the car park at 2.10pm

What time did Amelia enter the car park?

$$560 \div 5 = 112 \text{ mins}$$

$$\begin{array}{ccccccc} & & 1 \text{ hr} & 52 \text{ mins} & & & \\ & & - 42 \text{ mins} & & - 1 \text{ hr} & & \\ & - 10 \text{ mins} & & & & & \\ 2:10 \text{ pm} & \xrightarrow{\quad} & 2:00 \text{ pm} & \xrightarrow{\quad} & 1:18 \text{ pm} & \xrightarrow{\quad} & 12:18 \text{ pm} \end{array}$$

12:18 pm

(3)

22. Sophia took 20 driving lessons before taking her driving test.



8 of the lessons lasted 45 minutes.

The rest of the lessons lasted 1 hour 20 minutes *80 mins*

Each hour of driving lessons cost £55

Work out how much Sophia paid for her driving lessons.

$$\begin{array}{rcl} 8 \times 45 \text{ mins} & = & 360 \text{ mins} \quad (6 \text{ hrs}) \\ 12 \times 80 & = & 960 \text{ mins} \quad (16 \text{ hrs}) \\ & + & \\ & \hline & & 22 \text{ hrs} \end{array}$$

$$22 \times 55 = £1210$$

£1210

(4)

23. This week Yasmin worked on Tuesday, Thursday and Sunday.



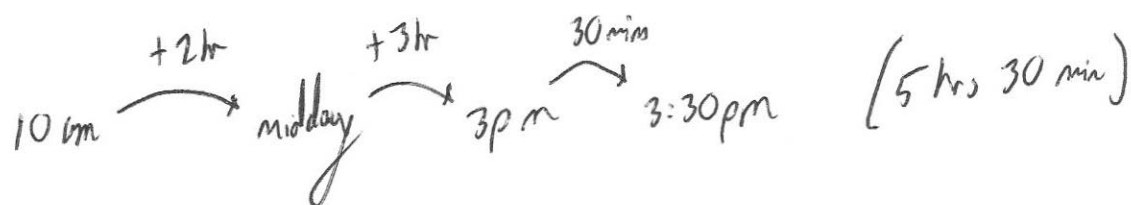
On both Tuesday and Thursday, she started work at 10am and finished at 3:30pm.

Yasmin is paid £16 per hour.

On Sunday, she is paid  $1\frac{1}{2}$  times the rate she is normally paid.

Yasmin worked 2 hours on Sunday.

Work out how much money Yasmin earned for her work this week.



$$5.5 \times 2 = 11 \text{ hours (Tues \& Thurs)}$$

$$11 \times 16 = £176 \text{ (Tues \& Thurs)}$$

$$16 \times 1.5 = £24 \text{ per hour (Sunday)}$$

$$2 \times 24 = £48 \text{ (Sunday)}$$

$$176 + 48 = £224$$

£224

(5)

24. The timetable for a flight from London to Beijing is shown.



Departure from London	5 August 20:25
Arrival in Beijing	6 August 13:10

+7 hours

When it is 1pm in London, it is 8pm in Beijing.

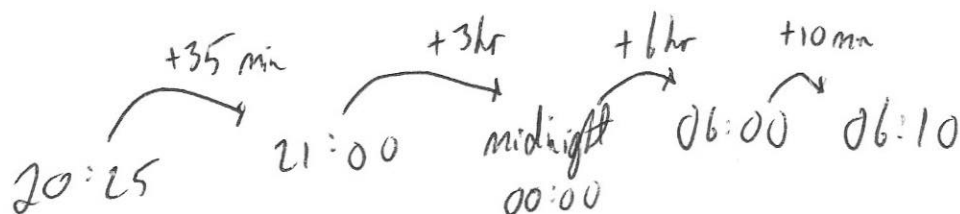
How long should the journey take?

Give your answer in hours and minutes.

Show your working.

$$13:10 \text{ (minus 7 hours)} = 06:10$$

The plane arrives in Beijing at 06:10 (London Time)



9 hr 45 mins

9      45  
.....hours.....minutes  
(3)